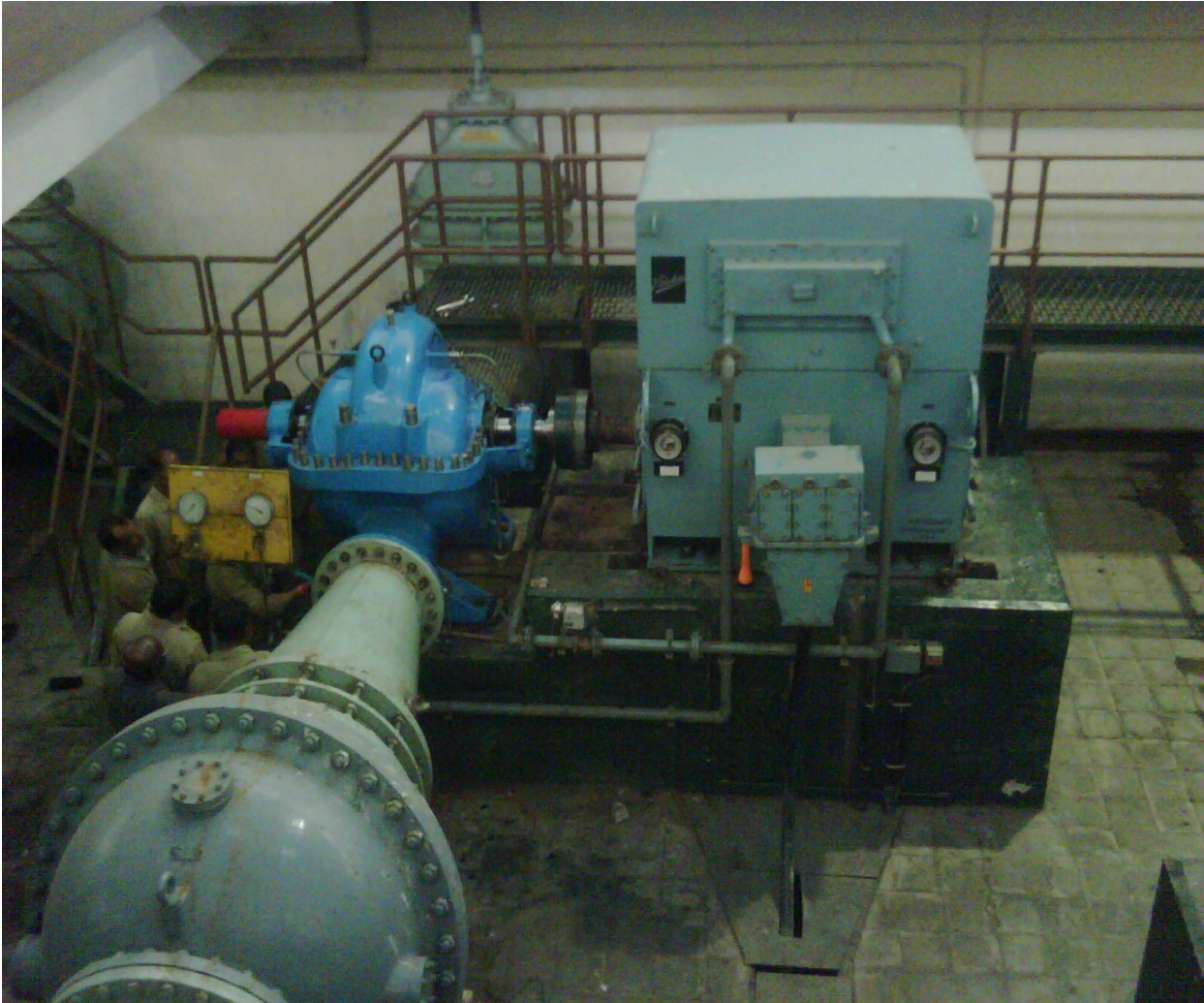


***REPLACEMENT OF PUMPS AT MCGM
PANJRAPUR PUMPING STATION***



M.C.G.M Panjrapur pumping station, the largest drinking water pumping station in Asia which supplies almost 60% of drinking water to Mumbai.

When one of the pump in the pumping system broke down due to continuous operations for over more than a decade & since this pumping station supplies majority of the drinking water to Mumbai and hence it was very crucial that it was fixed as soon as possible.

The earlier installed pump was a Worthington Germany make pump, so to import the pump on such a short notice was very difficult so they decided to get it manufactured from India only, as spares of an imported pump are very hard to procure and it would also turn out to be a very expensive process. They called the bid for the same and VEMC won the bid for Designing, Manufacturing, Supply, Installation, testing & commissioning of the pump along with 2 Nos. Of Rotating Assemblies.

The Specification of the pump was 113.6 MLD Flow, at 66.8 m Head and motor rating of 1200 kW .VEMC tied up with M/S WPIL ltd to get the pump manufactured as per the design and specifications .

The complete Work was completed within stipulated period specified by MCGM and with satisfying results.